

Periodic Table of Investment Returns

Annual Return Percentages for Selected Asset Categories (1992-2006)

Ranked in order of performance (best to worst)

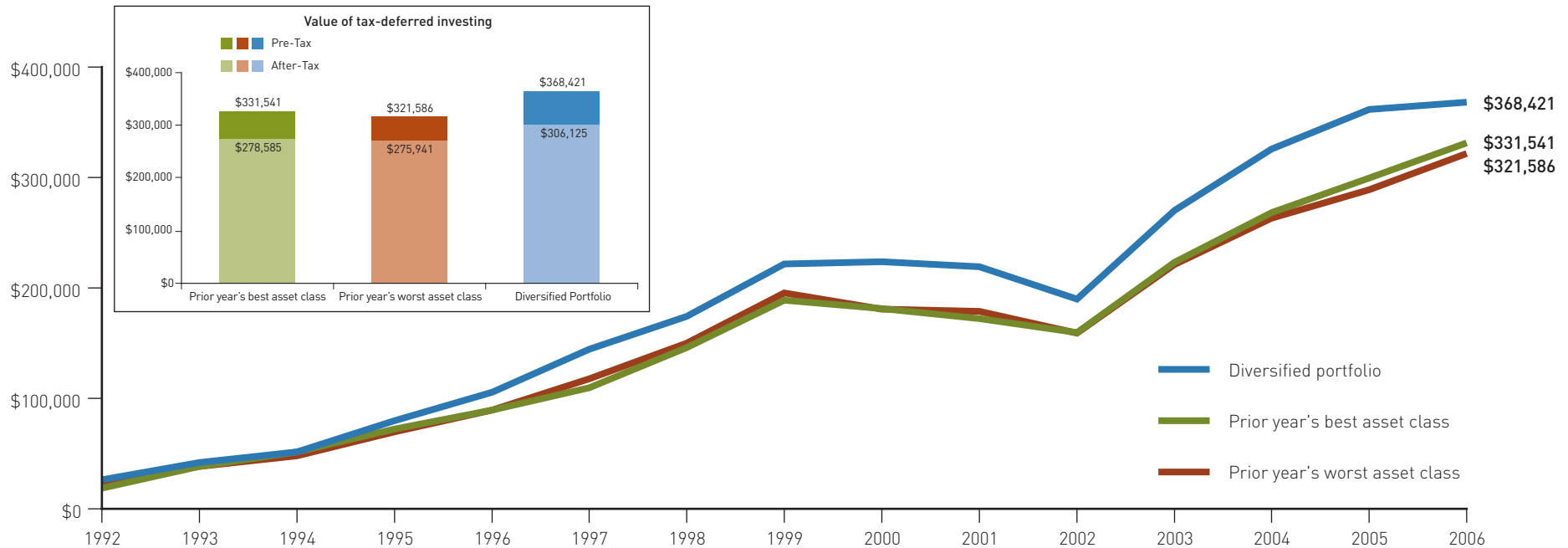


	1992	1993	1994	1995	1996	1997	1998	1999	2000	2001	2002	2003	2004	2005	2006
BEST	Russell 2000 Value 29.14	MSCI EAFE 32.56	MSCI EAFE 7.78	Russell 1000 Value 38.36	Russell 1000 Growth 23.12	Russell 1000 Value 35.18	Russell 1000 Growth 38.71	Russell Midcap Growth 51.29	Russell 2000 Value 22.83	Russell 2000 Value 14.02	Lehman Bro. Agg. Bond 10.25	Russell 2000 Growth 48.54	Russell Midcap Value 23.70	MSCI EAFE 13.54	MSCI EAFE 26.34
	Russell Midcap Value 21.68	Russell 2000 Value 23.77	Russell 1000 Growth 2.62	Russell 1000 37.77	Russell 1000 22.45	Russell Midcap Value 34.37	Russell 1000 27.02	Russell 2000 Growth 43.09	Russell Midcap Value 19.18	Lehman Bro. Agg. Bond 8.44	Russell Midcap Value -9.64	Russell 2000 47.25	Russell 2000 Value 22.25	Russell Midcap 12.65	Russell 2000 Value 23.48
	Russell 2000 18.41	Russell 2000 18.88	Russell 1000 0.39	Russell 1000 Growth 37.18	Russell 1000 Value 21.64	Russell 1000 32.85	MSCI EAFE 19.94	Russell 1000 Growth 33.16	Lehman Bro. Agg. Bond 11.63	Russell 2000 2.49	Russell 2000 Value -11.42	Russell 2000 Value 46.03	MSCI EAFE 20.25	Russell Midcap Value 12.65	Russell 1000 Value 22.25
	Russell Midcap 16.34	Russell 1000 Value 18.07	Diversified Portfolio -0.60	Russell Midcap Value 34.93	Russell 2000 Value 21.37	Russell 2000 Value 31.78	Russell Midcap Growth 17.86	MSCI EAFE 27.02	Russell Midcap 8.25	Russell Midcap Value 2.33	Russell 1000 Value -15.52	Russell Midcap Growth 42.71	Russell Midcap 20.22	Russell Midcap Growth 12.10	Russell Midcap Value 20.22
	Russell 1000 Value 13.58	Russell Midcap Value 15.62	Russell 2000 Value -1.54	Russell Midcap 34.45	Russell Midcap Value 20.26	Russell 1000 Growth 30.49	Russell 1000 Value 15.63	Russell 2000 21.26	Russell 1000 Value 7.01	Russell 1000 Value -5.59	MSCI EAFE -15.94	Russell Midcap 40.06	Russell 2000 18.33	Diversified Portfolio 7.96	Russell 2000 18.37
	Diversified Portfolio 11.33	Diversified Portfolio 15.46	Russell 2000 -1.82	Russell Midcap Growth 33.98	Russell Midcap 19.00	Russell Midcap 29.01	Diversified Portfolio 12.47	Russell 1000 20.91	Russell 2000 -3.02	Russell Midcap -5.62	Russell Midcap -16.19	MSCI EAFE 38.59	Russell 1000 Value 16.49	Russell 1000 Value 7.05	Diversified Portfolio 16.99
	Russell 1000 8.93	Russell Midcap 14.30	Russell 1000 Value -1.98	Russell 2000 Growth 31.04	Russell Midcap Growth 17.48	Diversified Portfolio 24.80	Russell Midcap 10.09	Diversified Portfolio 20.19	Diversified Portfolio -3.17	Diversified Portfolio -6.62	Diversified Portfolio -16.76	Russell Midcap Value 38.07	Diversified Portfolio 16.42	Russell 1000 6.27	Russell 1000 15.46
	Russell Midcap Growth 8.71	Russell 2000 Growth 13.37	Russell Midcap -2.09	Diversified Portfolio 29.97	Diversified Portfolio 16.91	Russell Midcap Growth 22.54	Lehman Bro. Agg. Bond 8.69	Russell Midcap 18.23	Russell 1000 -7.79	Russell 2000 Growth -9.23	Russell 2000 -20.48	Diversified Portfolio 35.24	Russell Midcap Growth 15.48	Russell 1000 Growth 5.26	Russell Midcap 15.26
	Russell 2000 Growth 7.77	Russell Midcap Growth 11.19	Russell Midcap Value -2.13	Russell 2000 28.45	Russell 2000 16.49	Russell 2000 22.36	Russell Midcap Value 5.08	Russell 1000 Value 7.35	Russell Midcap Growth -11.75	Russell 1000 -12.45	Russell 1000 -21.65	Russell 1000 Value 30.03	Russell 2000 Growth 14.31	Russell 2000 Value 4.71	Russell 2000 Growth 13.35
	Lehman Bro. Agg. Bond 7.40	Russell 1000 10.18	Russell Midcap Growth -2.16	Russell 2000 Value 25.75	Russell 2000 Growth 11.26	Russell 2000 Growth 12.95	Russell 2000 Growth 1.23	Russell Midcap Value -0.11	MSCI EAFE -14.17	Russell Midcap Growth -20.15	Russell Midcap Growth -27.41	Russell 1000 29.89	Russell 1000 11.40	Russell 2000 4.55	Russell Midcap Growth 10.66
	Russell 1000 Growth 4.99	Lehman Bro. Agg. Bond 9.75	Russell 2000 Growth -2.43	Lehman Bro. Agg. Bond 18.47	MSCI EAFE 6.05	Lehman Bro. Agg. Bond 9.65	Russell 2000 -2.55	Lehman Bro. Agg. Bond -0.82	Russell 1000 Growth -22.42	Russell 1000 Growth -20.42	Russell 1000 Growth -27.88	Russell 1000 Growth 29.75	Russell 1000 Growth 6.30	Russell 2000 Growth 4.15	Russell 1000 Growth 9.07
WORST	MSCI EAFE -12.17	Russell 1000 Growth 2.87	Lehman Bro. Agg. Bond -2.92	MSCI EAFE 11.21	Lehman Bro. Agg. Bond 3.63	MSCI EAFE 1.78	Russell 2000 Value -6.45	Russell 2000 Value -1.49	Russell 2000 Growth -22.43	MSCI EAFE -21.44	Russell 2000 Growth -30.26	Lehman Bro. Agg. Bond 4.10	Lehman Bro. Agg. Bond 4.34	Lehman Bro. Agg. Bond 2.43	Lehman Bro. Agg. Bond 4.33

- Diversified Portfolio/Equal allocation to all categories
- Lehman Bro. Agg. Bond Index
- MSCI EAFE Index
- Russell 1000 Index
- Russell 1000 Value Index
- Russell 1000 Growth Index
- Russell 2000 Index
- Russell 2000 Value Index
- Russell 2000 Growth Index
- Russell Midcap Index
- Russell Midcap Value Index
- Russell Midcap Growth Index

Source: Bloomberg

Chasing Performance vs. a Diversified Strategy: Value of \$10,000 Invested Annually (1992 - 2006)



Please consider the charges, risks, expenses and investment objectives carefully before investing. For a prospectus containing this and other information, please call your investment professional or download the file from janus.com. Read it carefully before you invest or send money.

Past performance is no guarantee of future results and investment results and principal value will fluctuate so that shares, when redeemed, may be worth more or less than their original cost. Total return includes reinvestment of dividends and capital gains. Changes in tax rates and tax treatment of investment earnings may further impact comparative results.

Periodic Table: Lehman Brothers Aggregate. Bond Index is an index comprised of approximately 6,000 publicly traded bonds including U.S. Government, mortgage-backed, corporate and Yankee bonds with an average maturity of approximately 10 years. The index is weighted by the market value of the bonds included in the index. This index represents asset types, which are subject to risk, including loss of principal.

The MSCI EAFE Index is an international index measuring market performance of 21 countries in Europe, Australasia, and the Far East. It's divided into 8 economic sectors and 38 industry groups.

The Russell 1000 Index measures the performance of the 1,000 largest companies in the Russell 3000 Index.

The Russell 1000 Value Index measures the performance of those Russell 1000 companies with lower price-to-book ratios and lower forecasted growth values.

The Russell 1000 Growth Index measures the performance of those Russell 1000 companies with higher price-to-book ratios and higher forecasted growth values.

The Russell 2000 Index is an index of 2000 small-cap companies located in the U.S. Managed by the Frank Russell Company.

Russell 2000 Value Index measures the performance of those Russell 2000 companies with lower price-to-book ratios and lower forecasted growth values.

Russell 2000 Growth Index measures the performance of those Russell 2000 companies with higher price-to-book ratios and higher forecasted growth values. These stocks are selected from the 2,000 smallest companies in the Russell 3000 Index, which represents approximately 10% of the total market capitalization of the Russell 3000 Index. Small company investments are subject to more fluctuation in value than investments in larger, more stable companies.

The Russell Midcap Index measures the performance of the 800 smallest companies in the Russell 1000 Index.

The Russell Midcap Value Index measures the performance of those Russell MidCap companies with lower price-to-book ratios and lower forecasted growth values.

The Russell Midcap Growth Index measures the performance of those Russell MidCap companies with higher price-to-book ratios and higher forecasted growth values.

See paragraph below for "Diversified Portfolio" definition. A mutual funds' portfolio may differ significantly from the securities held in the indices. These indices are not available for direct investment; therefore, their performance does not reflect the expenses associated with the active management of an actual portfolio.

Graph Source: Bloomberg. The "Diversified Portfolio" was constructed by allocating a \$10,000 annual investment evenly across the following eleven asset classes, as represented by the following indices: Small-Cap Growth stocks (Russell 2000 Growth), Small-Cap Value stocks (Russell 2000 Value), Small-Cap stocks (Russell 2000), MidCap Growth stocks (Russell Midcap Growth), MidCap Value stocks (Russell Midcap Value), MidCap stocks (Russell Midcap), Large-Cap stocks (Russell 1000), International stocks (MSCI EAFE), Bonds (Lehman Bro. Agg. Bond), Large-Cap Growth stocks (Russell 1000 Growth) and Large-Cap Value stocks (Russell 1000 Value). This hypothetical example does not represent the returns of any particular investment. A fund's performance may be affected by risks that include those associated with non-diversification, investments in foreign securities, non-investment grade debt securities, undervalued companies or companies with a relatively small market capitalization. After-tax returns estimated by reducing pre-tax returns by an amount equal to the 15-year average difference between pre-tax returns and SEC pre-liquidation after-tax returns by asset class, as reported by Morningstar.

Funds distributed by Janus Distributors LLC (1/07)